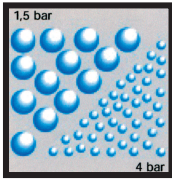
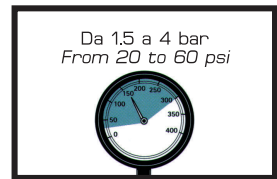
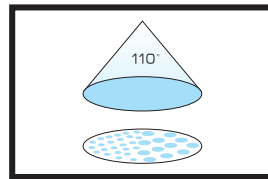
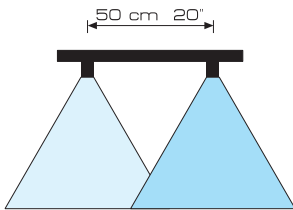




ALBUZ® AXI



300,618,3 EPDM
300,618,4 Viton FKM



Materiali: materiali plastici ad alta resistenza - allumina

Impiego: trattamenti fungicidi, insetticidi ed erbicidi. Applicazione di fertilizzanti liquidi. Distribuzione eccellente in un ampio arco di pressioni. Deriva ridotta a bassa pressione. Copertura eccellente a 4bar.

Ordine minimo: 100

Materials: high resistance plastic materials - ceramic

Use: fungicides, insecticides, herbicides and liquid fertilizers application on boom sprayers. Excellent spray distribution over a wide range of pressures. Reduced drift at lower pressures. Better coverage at 4bar / 60psi.

Minimum order: 100

FILTRO	COME SI ORDINA	bar	l/min	VELOCITÀ Km/h					
				6	8	10	12	14	16
80 MESH	225.1801.36 (110015) VERDE	1	0,34	68	51	41	34	29	26
		1,5	0,42	84	63	50	42	36	32
		2	0,48	96	72	58	48	41	36
		2,5	0,54	108	81	65	54	46	41
80 MESH	225.1801.37 (11002) GIALLO	1	0,46	92	69	55	46	39	35
		1,5	0,56	112	84	67	56	48	42
		2	0,65	130	98	78	65	56	49
		2,5	0,72	144	108	86	72	62	54
50 MESH	225.1801.38 (11003) BLU	1	0,68	136	102	82	68	58	51
		1,5	0,83	166	125	100	83	71	62
		2	0,96	192	144	115	96	82	72
		2,5	1,08	216	162	130	108	93	81
50 MESH	225.1801.39 (11004) ROSSO	1	0,91	272	204	163	136	117	102
		1,5	1,12	182	137	109	91	77	68
		2	1,29	224	168	134	112	96	84
		2,5	1,44	258	194	155	129	111	97
50 MESH	225.1801.40 (11005) MARRONE	1	1,14	288	216	173	144	123	108
		1,5	1,39	364	273	218	182	156	137
		2	1,61	228	171	137	114	98	86
		2,5	1,80	278	209	167	139	119	104
50 MESH	225.1801.40 (11005) MARRONE	3	1,97	322	242	193	161	138	121
		4	2,27	360	270	216	180	154	135
				394	296	236	197	169	148
				454	341	272	227	195	170

LITRI PER ETTERO

STRAINER	HOW TO ORDER	PSI	USGal min	SPEED Mph					
				4	5	6	7	8	10
80 MESH	225.1801.36 (110015) GREEN	15	0,09	6.9	5.5	4.6	3.9	3.4	2.8
		20	0,11	7.9	6.4	5.3	4.5	4.0	3.2
		30	0,13	9.7	7.8	6.5	5.6	4.9	3.9
		40	0,15	11.2	9.0	7.5	6.4	5.6	4.5
80 MESH	225.1801.37 (11002) YELLOW	15	0,12	12.6	10.0	8.4	7.2	6.3	5.0
		20	0,14	13.8	11.0	9.2	7.9	6.9	5.5
		30	0,17	16.7	13.4	11.2	9.6	8.4	6.7
		40	0,20	18.3	14.7	12.2	10.5	9.2	7.3
50 MESH	225.1801.38 (11003) BLUE	15	0,18	9.2	7.3	6.1	5.2	4.6	3.7
		20	0,21	10.6	8.5	7.1	6.0	5.3	4.2
		30	0,24	13.0	10.4	8.6	7.4	6.5	5.2
		40	0,26	15.0	12.0	10.0	8.6	7.5	6.0
50 MESH	225.1801.39 (11004) RED	15	0,22	16.7	13.4	11.2	9.6	8.4	6.7
		20	0,24	18.3	14.7	12.2	10.5	9.2	7.3
		30	0,26	13.9	11.1	9.2	7.9	6.9	5.5
		40	0,30	16.0	12.8	10.7	9.1	8.0	6.4
50 MESH	225.1801.39 (11004) RED	50	0,34	19.6	15.7	13.1	11.2	9.8	7.8
		60	0,37	22.6	18.1	15.1	12.9	11.3	9.0
		15	0,24	25.3	20.2	16.9	14.5	12.6	10.1
		20	0,28	27.7	22.2	18.5	15.8	13.9	11.1
50 MESH	225.1801.39 (11004) RED	30	0,35	18.4	14.7	12.3	10.5	9.2	7.4
		40	0,40	21.3	17.0	14.2	12.2	10.6	8.5
		50	0,45	26.1	20.9	17.4	14.9	13.0	10.4
		60	0,49	30.1	24.1	20.1	17.2	15.1	12.0
50 MESH	225.1801.40 (11005) BROWN	15	0,31	33.7	26.9	22.4	19.2	16.8	13.5
		20	0,36	36.9	29.5	24.6	21.1	18.4	14.7
		30	0,43	23.0	18.4	15.3	13.2	11.5	9.2
		40	0,50	26.6	21.3	17.7	15.2	13.3	10.6
50 MESH	225.1801.40 (11005) BROWN	50	0,57	32.5	26.0	21.7	18.6	16.3	13.0
		60	0,62	37.6	30.1	25.0	21.5	18.8	15.0
				42.0	33.6	28.0	24.0	21.0	16.8
				46.0	36.8	30.7	26.3	23.0	18.4

USGALLONS PER ACRE